

POND

FORMERLY M.S.F TOBEY ETALS.  
Now TREMONT NAIL COMPANY

TREMONT NAIL COMPANY

TREMONT

1208  
SOUTHERLY SIDE  
Base Line  
LINE OF LOCATION OF OLD COLONY RAILROAD.  
of Location of Old Colony Railroad.

1226  
SOUTHERLY SIDE  
LINE OF LOCATION OF OLD COLONY RAILROAD.

Abt. 335

AREA 2478

13  
1700 ACRES

33' x 33'

33' x 33'

PLAN OF LAND IN WAREHAM TO BE CONVEYED TO  
OLD COLONY RAILROAD COMPANY  
BY  
TREMONT NAIL COMPANY.

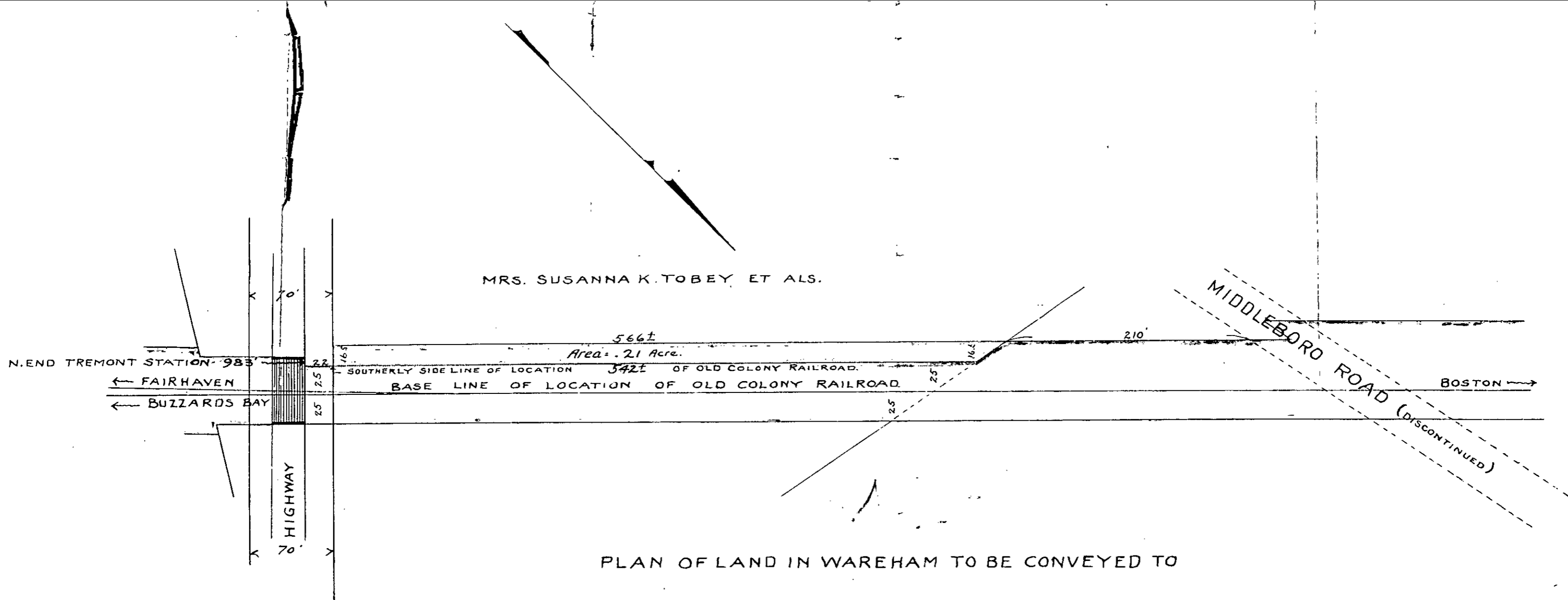
SCALE 1" = 80'

AUGUST 1907.

Wardham  
Iron Mill Co

MAY 21 1908

No. 19-214



MRS. SUSANNA K. TOBEY ET ALS.

566±

Area = .21 Acre.

SOUTHERLY SIDE LINE OF LOCATION OF OLD COLONY RAILROAD.

342±

BASE LINE OF LOCATION OF OLD COLONY RAILROAD.

210'

MIDDLEBORO ROAD (DISCONTINUED)

BOSTON

PLAN OF LAND IN WAREHAM TO BE CONVEYED TO

OLD COLONY RAILROAD COMPANY

BY

MRS. SUSANNA K. TOBEY ET ALS.

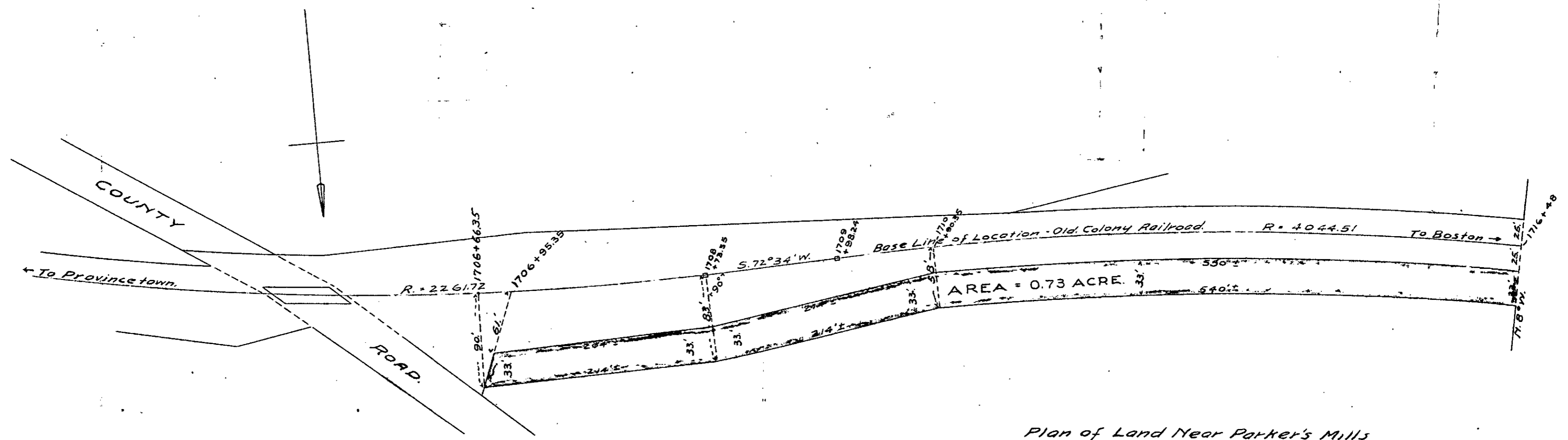
SCALE 1" = 80'

AUG. 1907.

Wareham  
S & S. J. & S. J.

MAY 21 1908

16-28-WAYD



Plan of Land Near Parker's Mills  
 in the Town of Wareham to be deeded  
 by John A. Anderson to the  
 Old Colony R.R. Co.  
 Scale 1" = 80' Aug. 11, 1905.

Wareham

1  
1

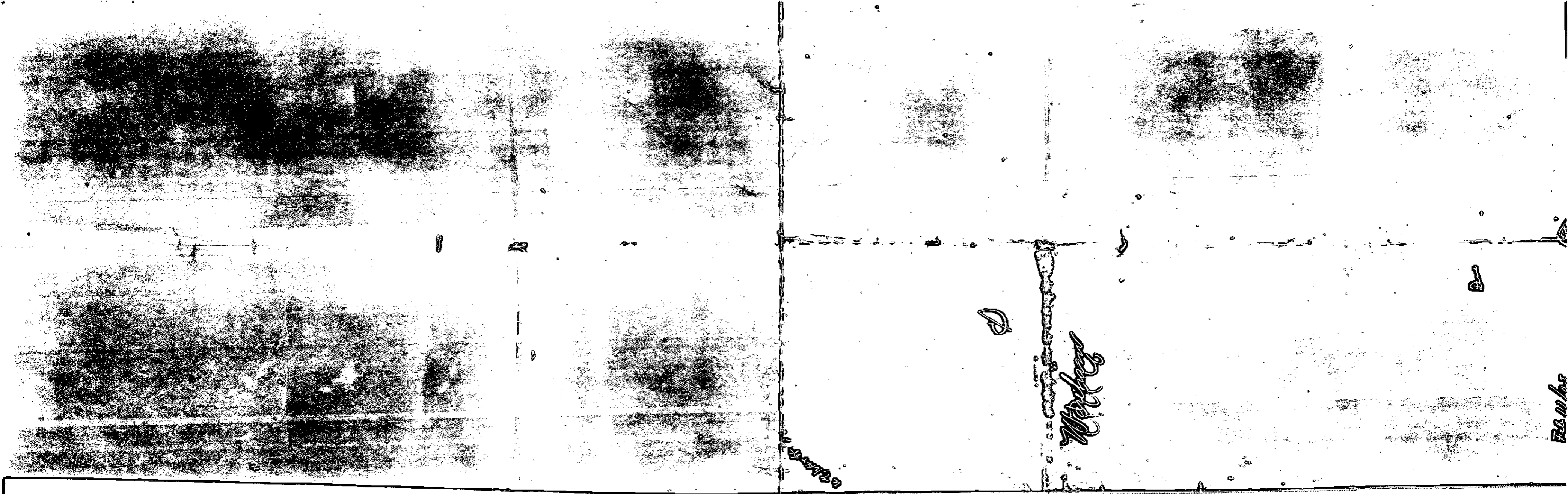
73887

May 12, 1906



N.Y.N.H.&H.R.R.  
PLYMOUTH DIV.  
PLAN OF LAND OWNED BY  
SAMUEL W. MORSE IN WAREHAM  
AND OCCUPIED BY RAILROAD.  
SCALE 1"=80'  
BOSTON, DEC 24, 1904.

F 3381  
54





MRS. SUSANNA K. TOBEY ET ALS.

POND

847'

1545

698'

$\frac{63}{100}$  Acre.

827' SOUTHERLY SIDE LINE OF LOCATION OF OLD COLONY RAILROAD 670'

BASE LINE OF LOCATION OF OLD COLONY RAILROAD

Abt 4735' to south end of Tremont Station.

BOSTON

58'

BUZZARDS BAY

25' x 41.25'

41.25' x 33'

33' x 33' x 25'

PLAN OF LAND IN WAREHAM TO BE CONVEYED TO

OLD COLONY RAILROAD COMPANY

BY

MRS. SUSANNA K. TOBEY ET ALS.

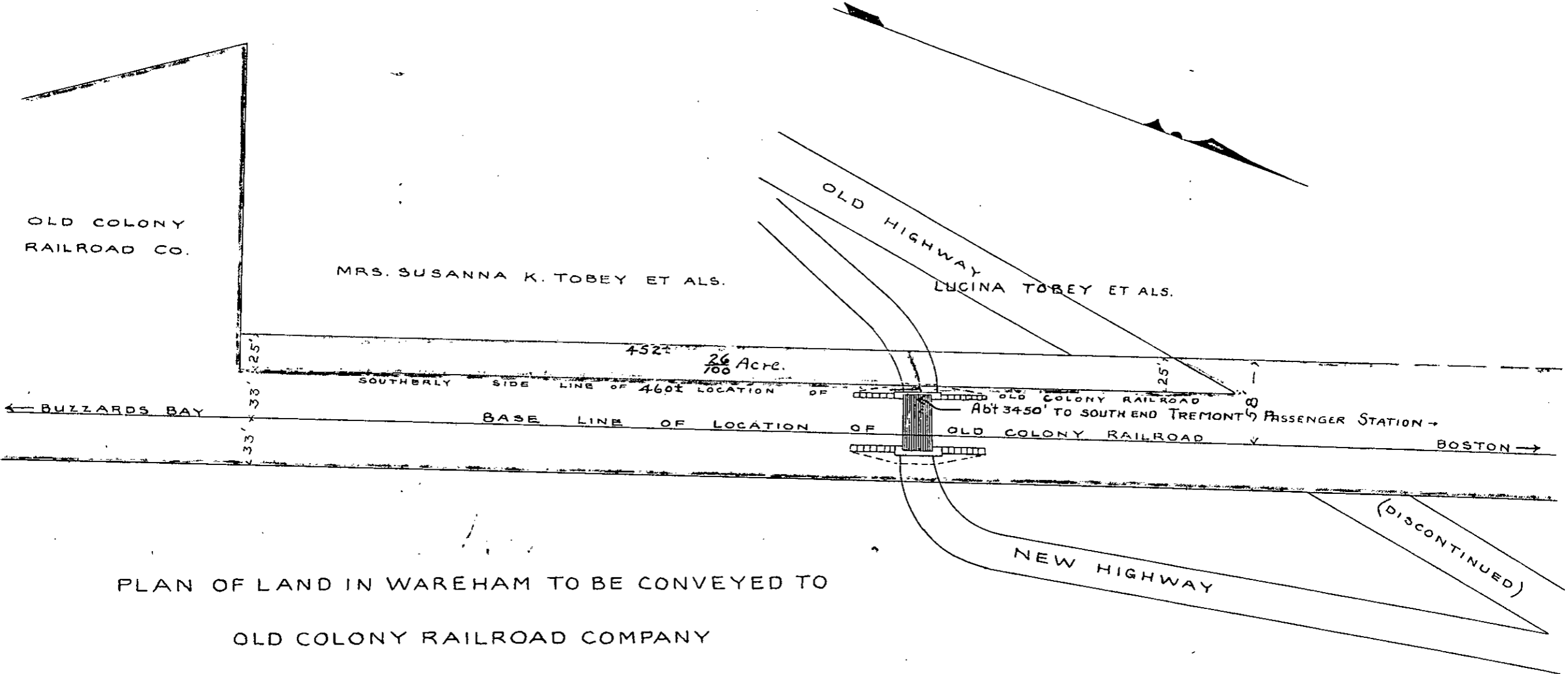
SCALE 1"=80'

JAN'Y 1907.

DB-ES-3108

Wareham  
S. H. Dole Ed

MAY 21 1908



PLAN OF LAND IN WAREHAM TO BE CONVEYED TO  
 OLD COLONY RAILROAD COMPANY  
 BY  
 MRS. SUSANNA K. TOBEY ET ALS.

SCALE 1"=80'

JAN<sup>y</sup> 1907.

Wareham

S. H. Coley del

TREMONT

STA. 1847+04

STA. 1850+51.57

BASE LINE OF LOCATION OLD COLONY RAILROAD

STA. 1856+02.14

Stone Post

Stone Post

58

LAI'D OUT 1887.

HIGHWAY

70'

S.A. Tobey et al

25' x 25'

66.7

AREA 1 <sup>15</sup>/<sub>100</sub> ACRES

511.67

102.5

TREMONT NAIL COMPANY

110'

ROAD

HIGHWAY LAID OUT BY COUNTY COMMISSIONERS. 1887.

TO CARVER

O.C.R.R. Co.

PLAN OF LAND IN WAREHAM MASS  
TO BE CONVEYED TO THE  
OLD COLONY R. R. Co.  
BY  
TREMONT NAIL COMPANY  
SCALE 1"=80' Sept. 1907.

*Wendland*

*Summit Road Co*

MAY 21 1908