

MARY S. WHITING.

abt. 1130'

Westerly Side Line of Location.

Area  $\frac{48}{100}$  A.

975'

Base Line of Location

Old Colony Railroad.

Easterly Side Line of Location.

STO  
18' 30"  
989+24.95

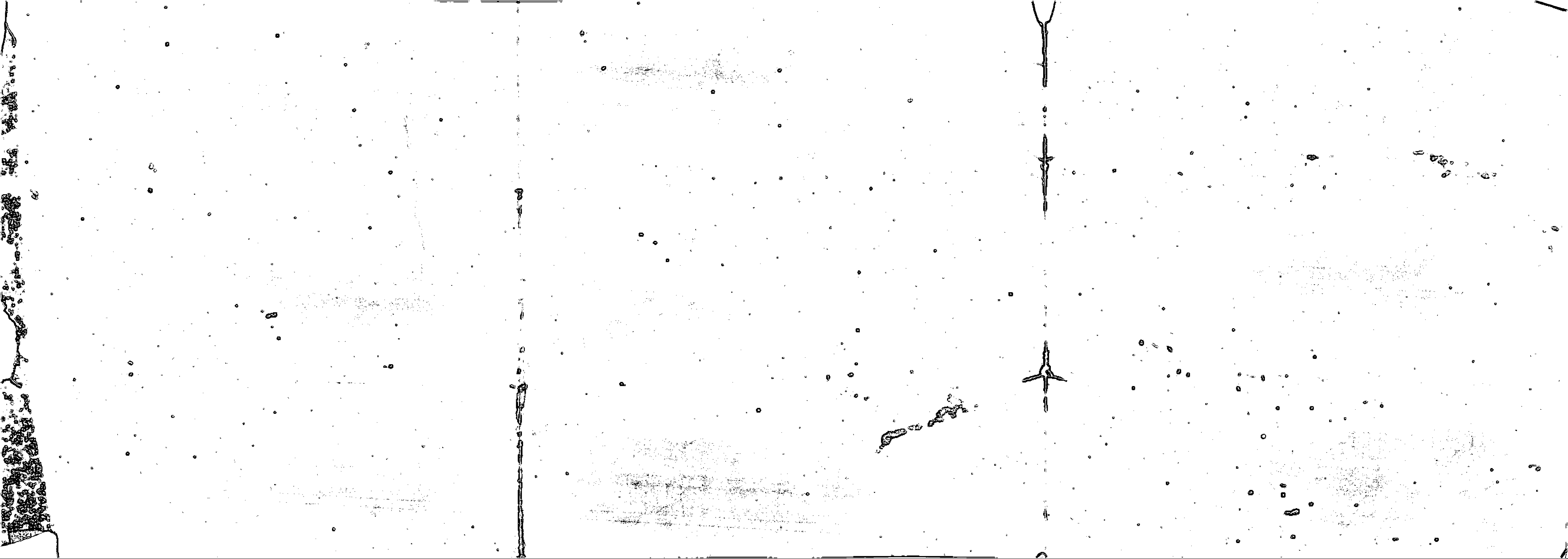
See  
Pemberton  
18' 30"

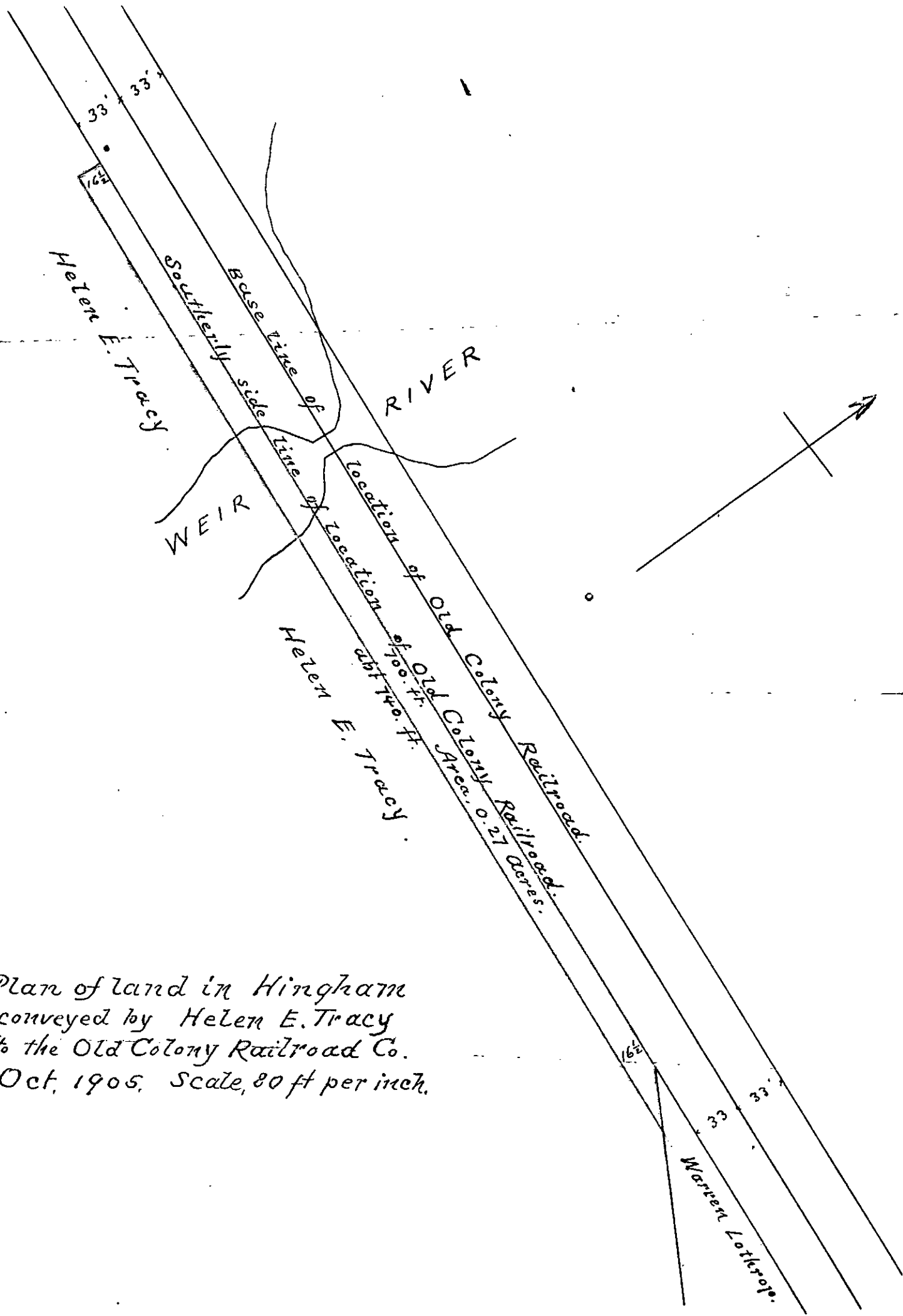
PLAN OF LAND TO BE CONVEYED TO  
OLD COLONY RAILROAD CO.

BY  
MARY S. WHITING.

SCALE 1"=40'

JULY 1905.





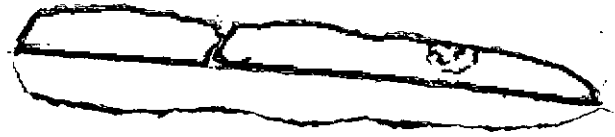
Plan of land in Hingham  
 conveyed by Helen E. Tracy  
 to the Old Colony Railroad Co.  
 Oct, 1905, Scale, 80 ft per inch.

Handwritten text, possibly a signature or name, oriented vertically on the left side of the page.

STREET.

99'

103'



156'

← Nantasket Jct.

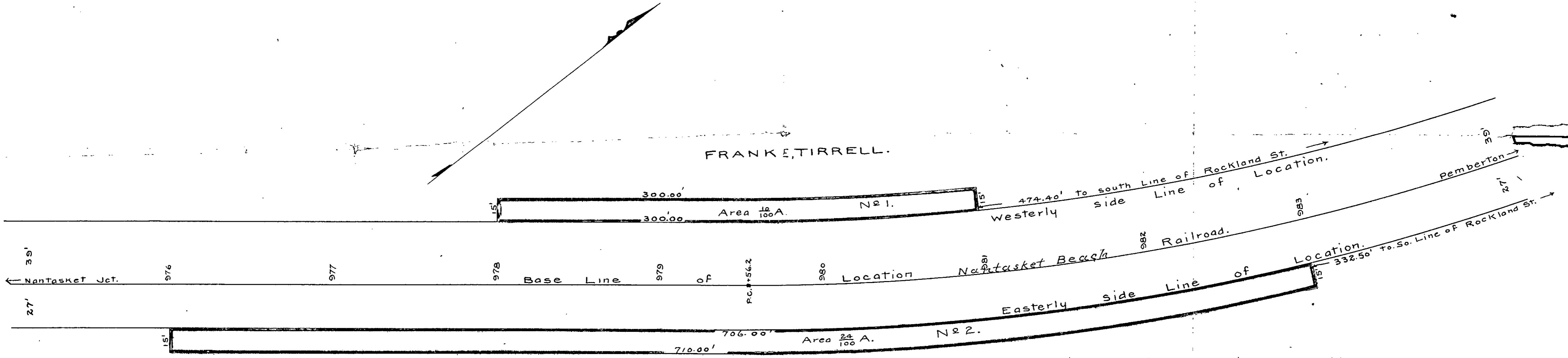
27'

ROCKLAND

W. H. Kingham  
20/2

20/1

20/06



FRANK E. TIRRELL.

PLAN OF LAND IN HINGHAM  
 Conveyed to the  
 OLD COLONY RAILROAD CO.  
 BY  
 FRANK E. TIRRELL.

SCALE 1"=40'

OCT. 1905.

8-10-1906

England