



Town Hall

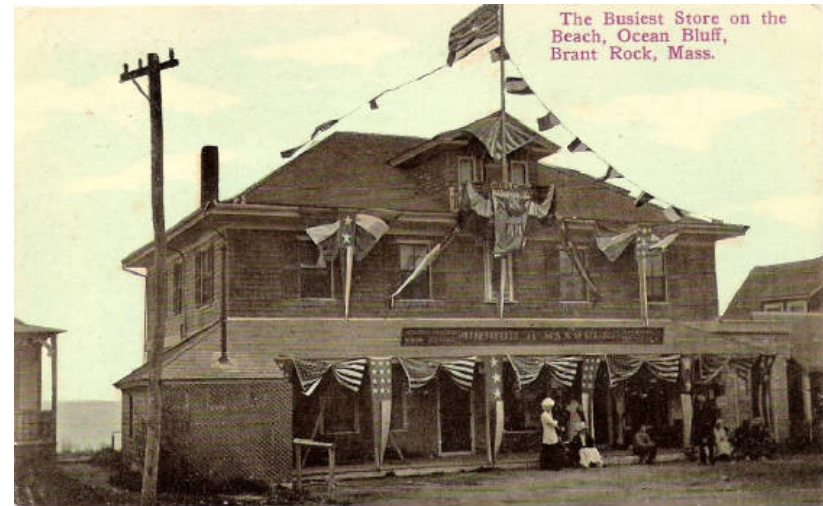


Daniel Webster Estate



Historic Winslow House

HISTORIC MARSHFIELD



ALONG THE SHORE, OCEAN BLUFF, MASS.

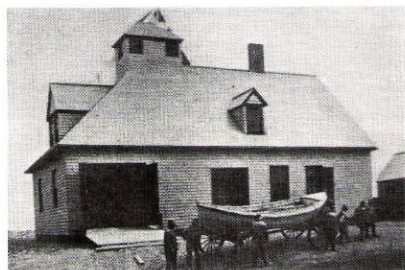
MARSHFIELD through the years

WRECK AND DEATH.

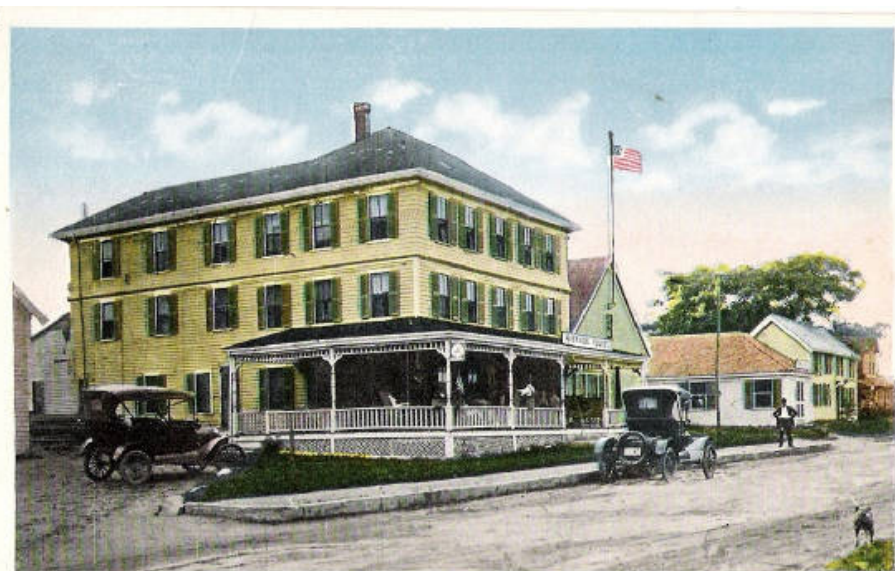
Dirce Destruction at Brant
Rock and Green Harbor.

Two Vessels Lost, Five Men Perish
and Many Cottages in Ruins.

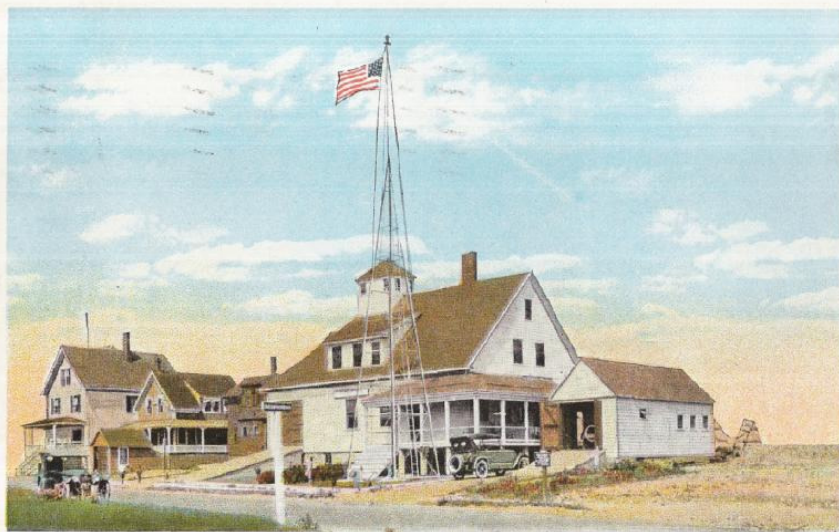
BRANT ROCK LIFE-SAVING STATION



Benjamin B. Manter was the keeper of the Brant Rock Station which was located in Marshfield near the old Union Chapel. Manter had a staffing problem that day. One surfman was away from the station due to family illness and Manter obtained Arthur Manter for his substitute. Surfmen Baker was on the day watch and noticed heavy traffic passing by including 23 schooners and 3 steamers. The other members of the station held a routine resuscitation drill.



RIVERSIDE HOUSE, GREEN HARBOR, MASS.



COAST GUARD STATION, BRANT ROCK, MASS.

108844



PEACE HAVEN HOTEL, BRANT ROCK.

MARSHFIELD



MARSHFIELD